



PRECISION

COMPENSATED SONIC

Compact

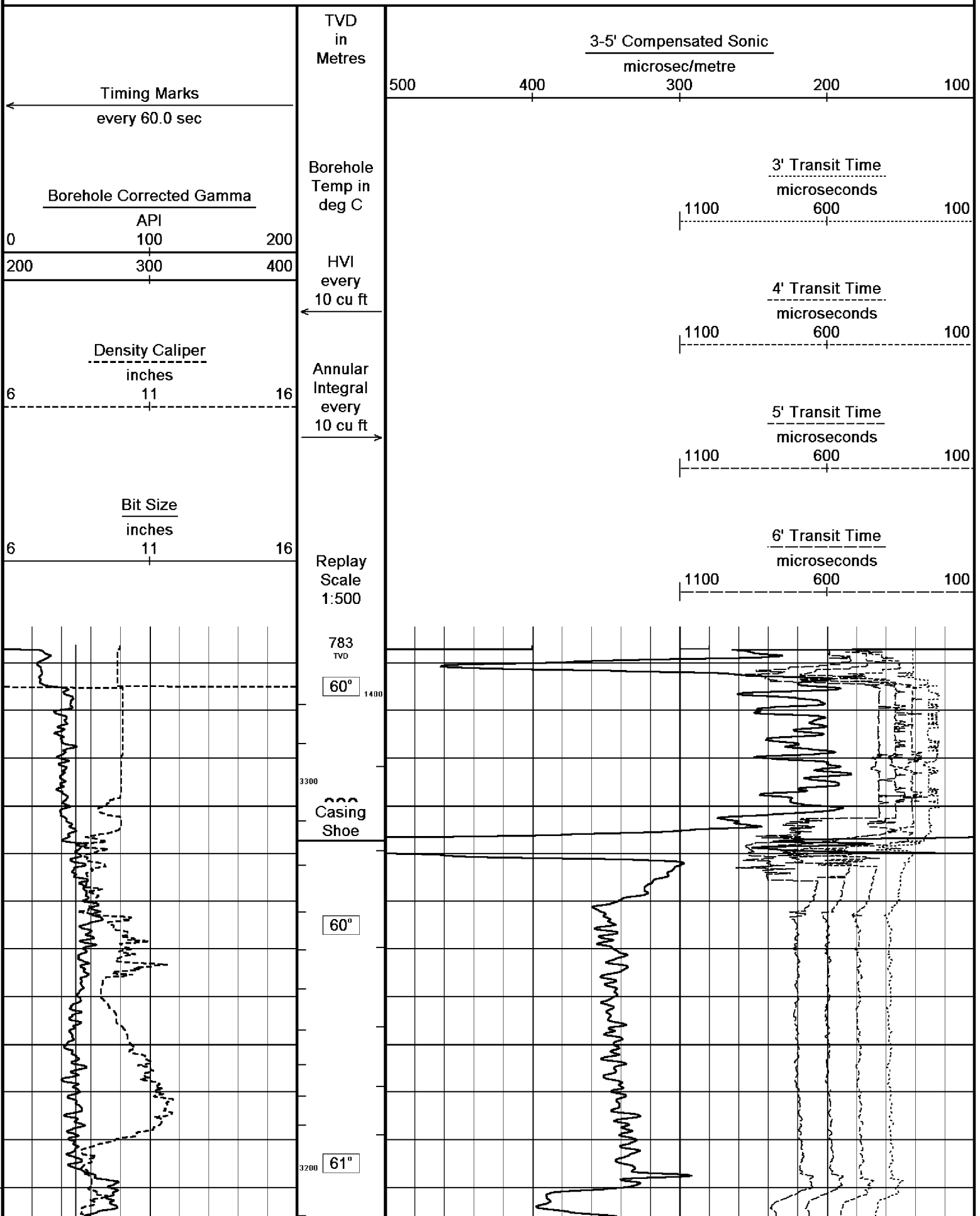
1:500 TVD

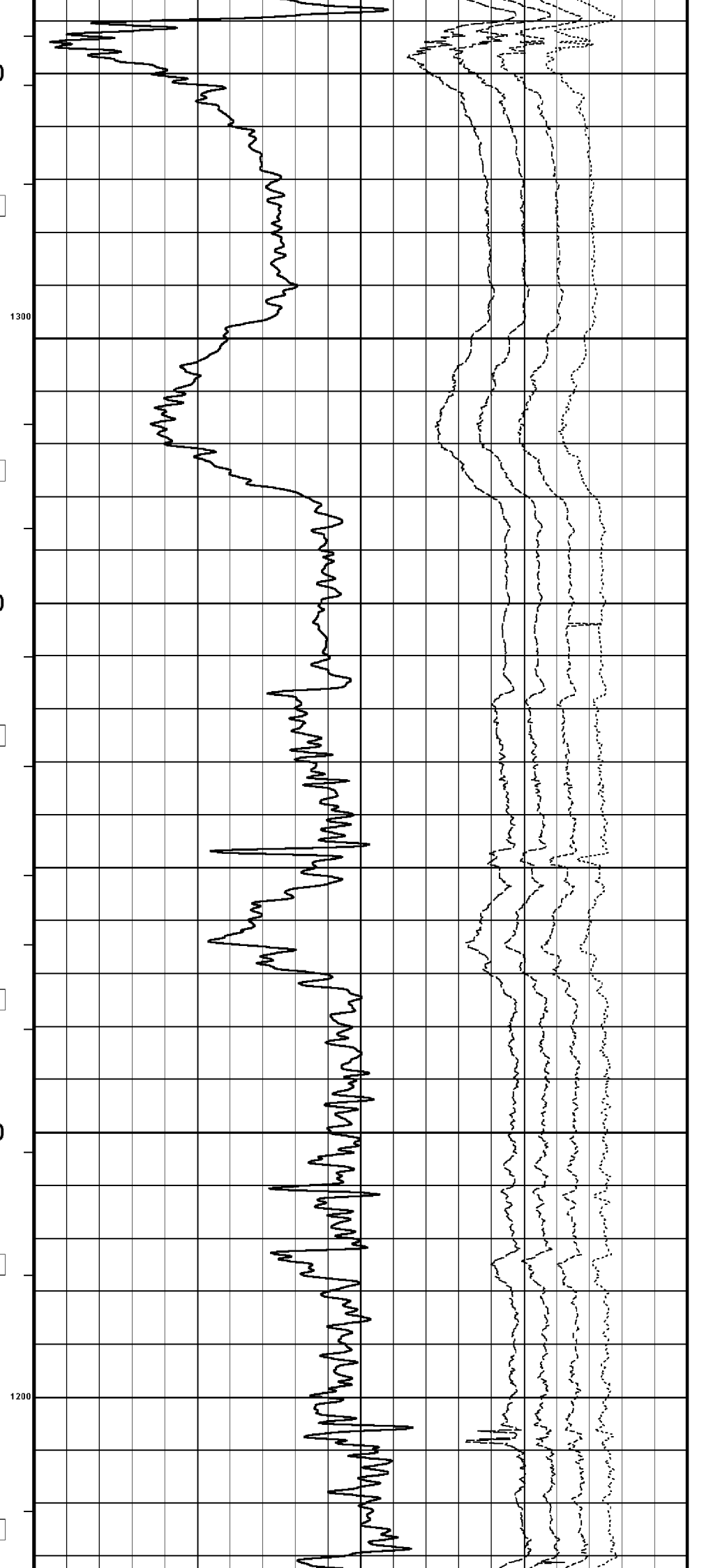
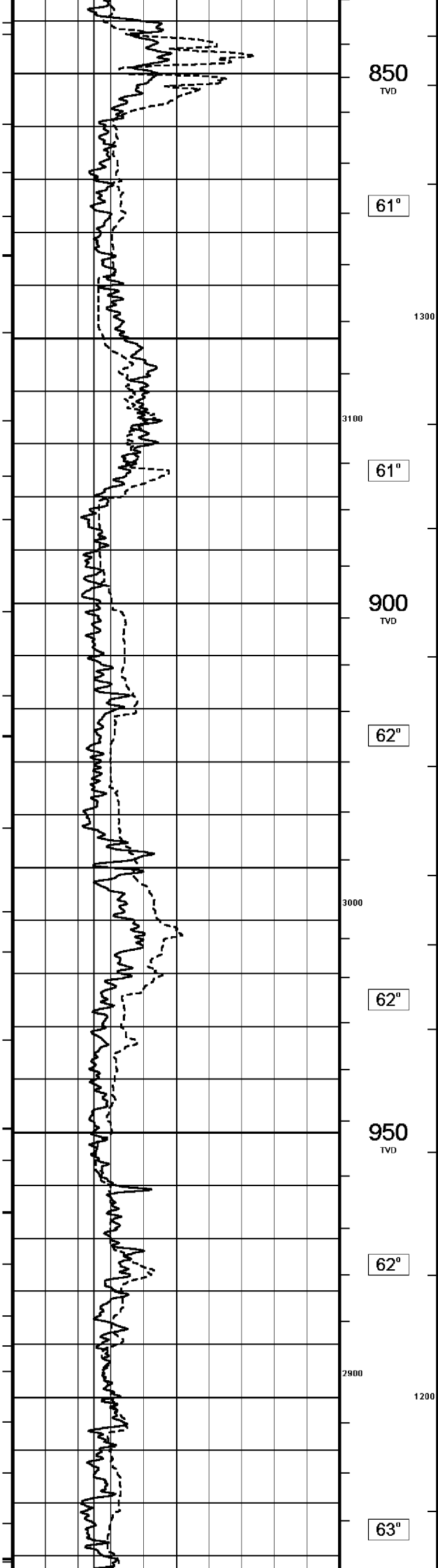
COMPANY		ESSO AUSTRALIA PTY.LTD		
WELL		WKF W27A		
FIELD		KINGFISH GDA94		
PROVINCE/COUNTRY		BASS STRAIT, VICTORIA		
COUNTRY/STATE		AUSTRALIA		
LOCATION		S 38 35 34.851, E 148 6 20.022		
		N 5727806.021 m, E 596279.875 m		
		FIELD PRINT		
LSD	SEC	TWP	RGE	Other Services
				COMPENSATED NEUTRON
				PHOTO DENSITY
				DUAL LATEROLOG
API Number				
Permit Number				
Permanent Datum MSL		, Elevation 0.0 metres		
Log Measured From DF @ 33.43m		above Permanent Datum		
Drilling Measured From DF				
Date	26-JUL-2006			Elevations: KB DF GL
Run Number	ONE			metres
Depth Driller	2366.00			metres
Depth Logger	2366.00			metres
First Reading	2362.00			metres
Last Reading	803.60			metres
Casing Driller	803.60			metres
Casing Logger	803.60			metres
Bit Size	8.50			inches
Hole Fluid Type	KCL/PHPA			
Density / Viscosity	1.16 g/cc			26.00 CP
PH / Fluid Loss	9.50			2.80 ml/30Min
Sample Source	FLOWLINE			
Rm @ Measured Temp	0.105 @ 25.0			ohm-m
Rmf @ Measured Temp	0.08 @ 25.0			ohm-m
Rmc @ Measured Temp	0.081 @ 25.0			ohm-m
Source Rmf / Rmc	MEAS			MEAS
Rm @ BHT	0.046 @ 87.1			ohm-m
Time Since Circulation	28 HOURS			
Max Recorded Temp	93.80			deg C
Equipment Name	CML			
Equipment / Base	1			SALE
Recorded By	R L TENCH, B J R MOSS			
Witnessed By	T LOBO			
LAST CIRC.	12:25 24/07			Last Line

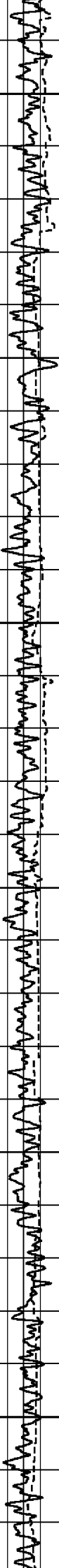
BOREHOLE RECORD				
Bit Size inches		Depth From metres		Depth To metres
8.500		895.00		3095.00
CASING RECORD				
Type	Size inches	Depth From metres	Shoe Depth metres	Weight pounds/ft
K-55	10.750	0.00	895.00	40.50

REMARKS
RIG: NABORS 453
5" SHUTTLE/MEMORY COMPACT OPERATION. CREW: R TENCH , B MOSS , J.BLESSING, M KOLCZE.
FIELD FINAL LOGS TO BE CORRELATED TO ANADRILL GAMMA LOG.
MAX. TEMPERATURE: 93.8 DEG C AT 3041m MD MAX. INCLINATION: 46.10 DEG AT 3095 m MD MAX. DOGLEG SEVERITY: 5.03 DEG/30m AT 993.08 m MD DEPLOYMENT ANGLE: 46.10 DEG
HVOL: 3285 FT^3 AVOL: 1382 FT^3
LOGGING SPEED 6M/MIN FROM TD TO 2791.52 M MD LOGGING SPEED 12 M/MIN FROM 2791.52 TO 1297.42 M MD LOGGING SPEED 6 M/MIN FROM 1297.42 TO 1125.7 M MD LOGGING SPEED 12 M/MIN FROM 1125.7 TO 866.87 M MD
BRIDGED OFF AT 2364M MD, REQUIRED 3BBLs FLOW TO PASS BRIDGE.

All interpretations are opinions based on inferences from electrical or other measurements and we cannot, and do not, guarantee the accuracy or correctness of any interpretations, and we shall not, except in the case of gross or wilful negligence on our part, be liable or responsible for any loss, costs, damages or expenses incurred or sustained by anyone resulting from any interpretation made by any of our officers, agents or employees. These interpretations are also subject to our general terms and conditions in our price schedule.







1000
TVD

63°

2800

64°

1050
TVD

64°

2700

65°

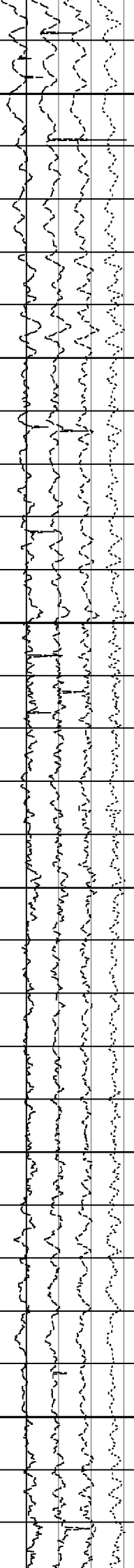
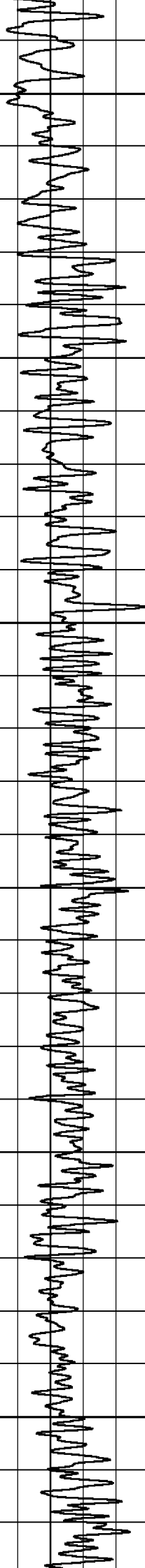
1100

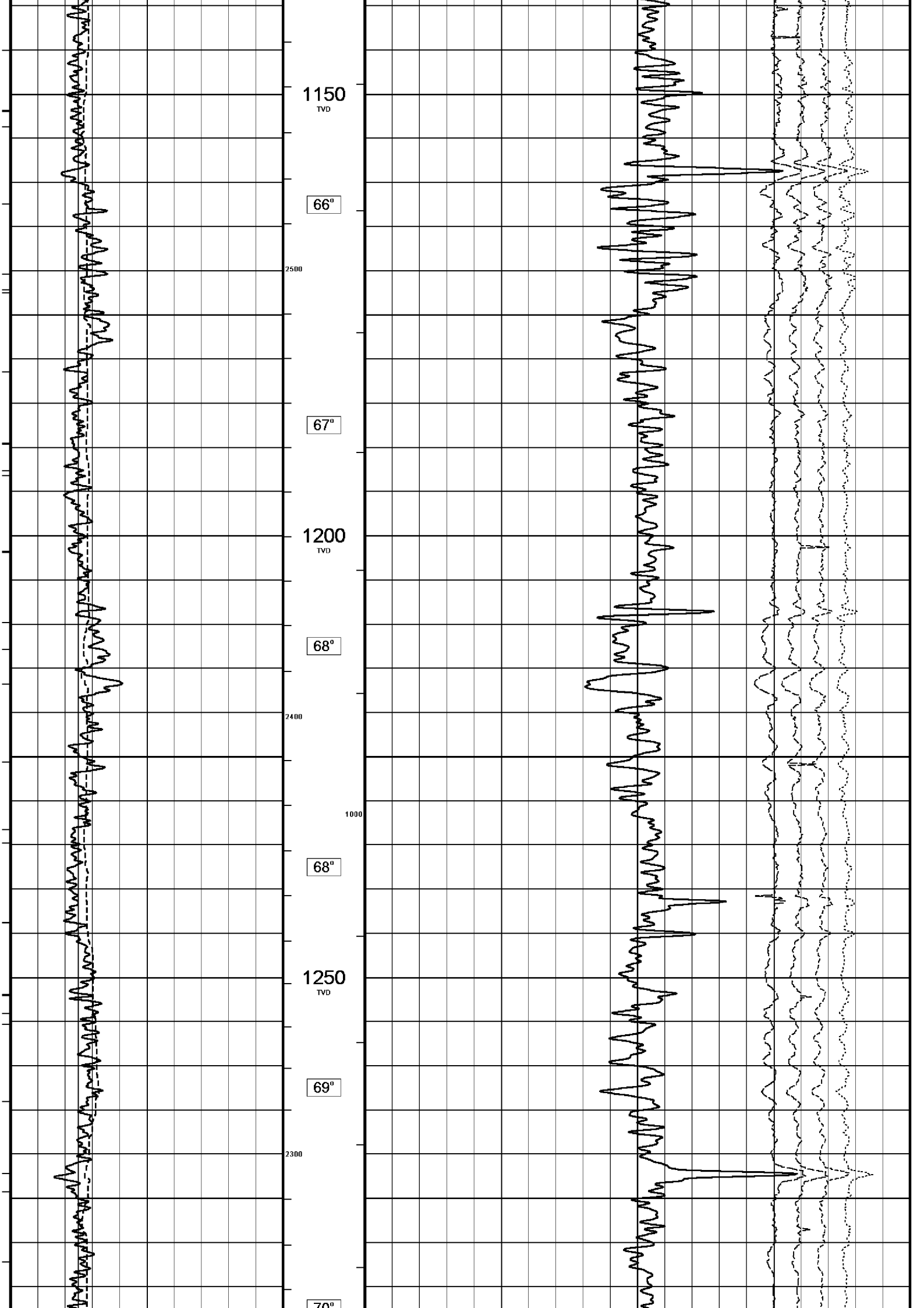
1100
TVD

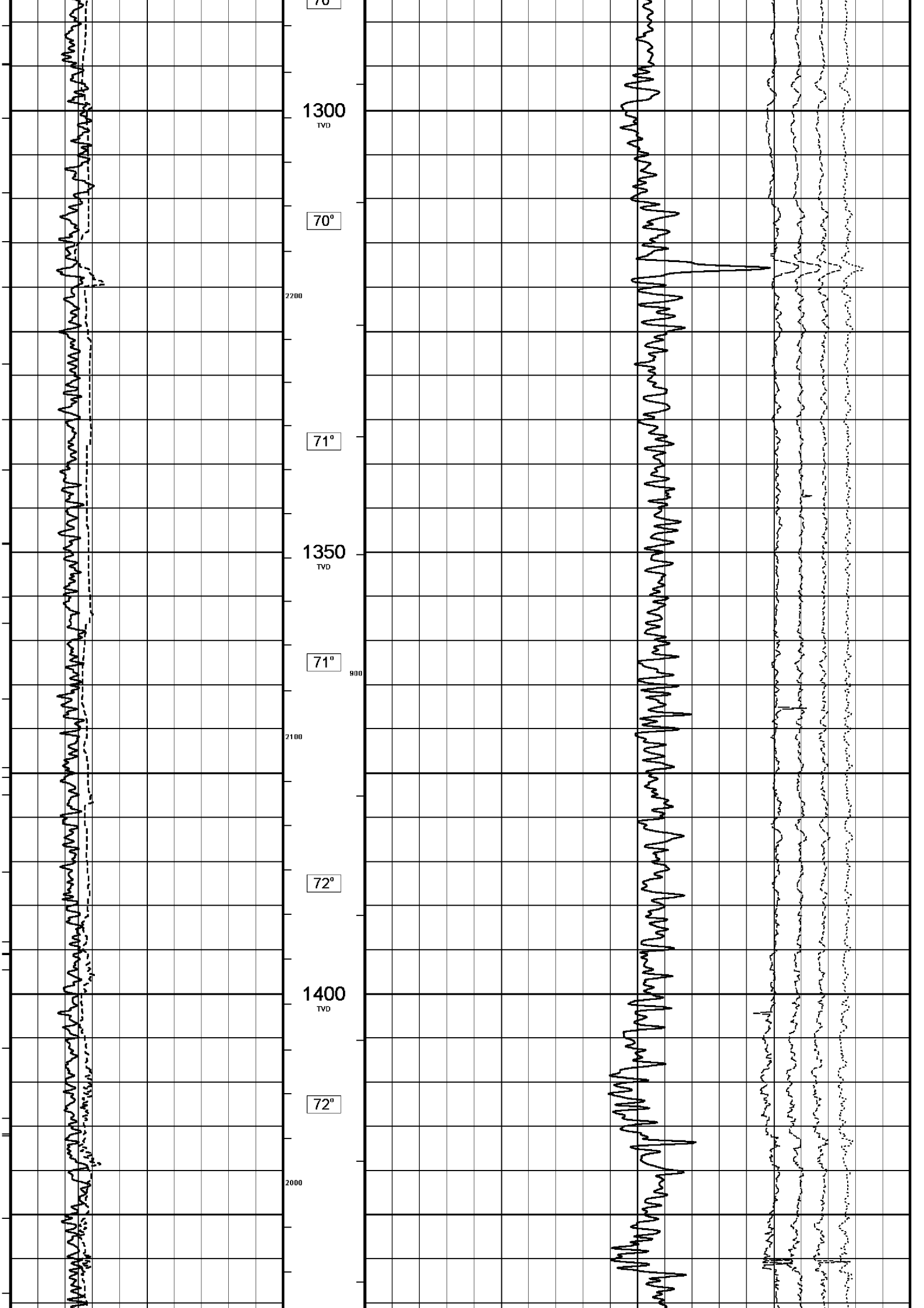
65°

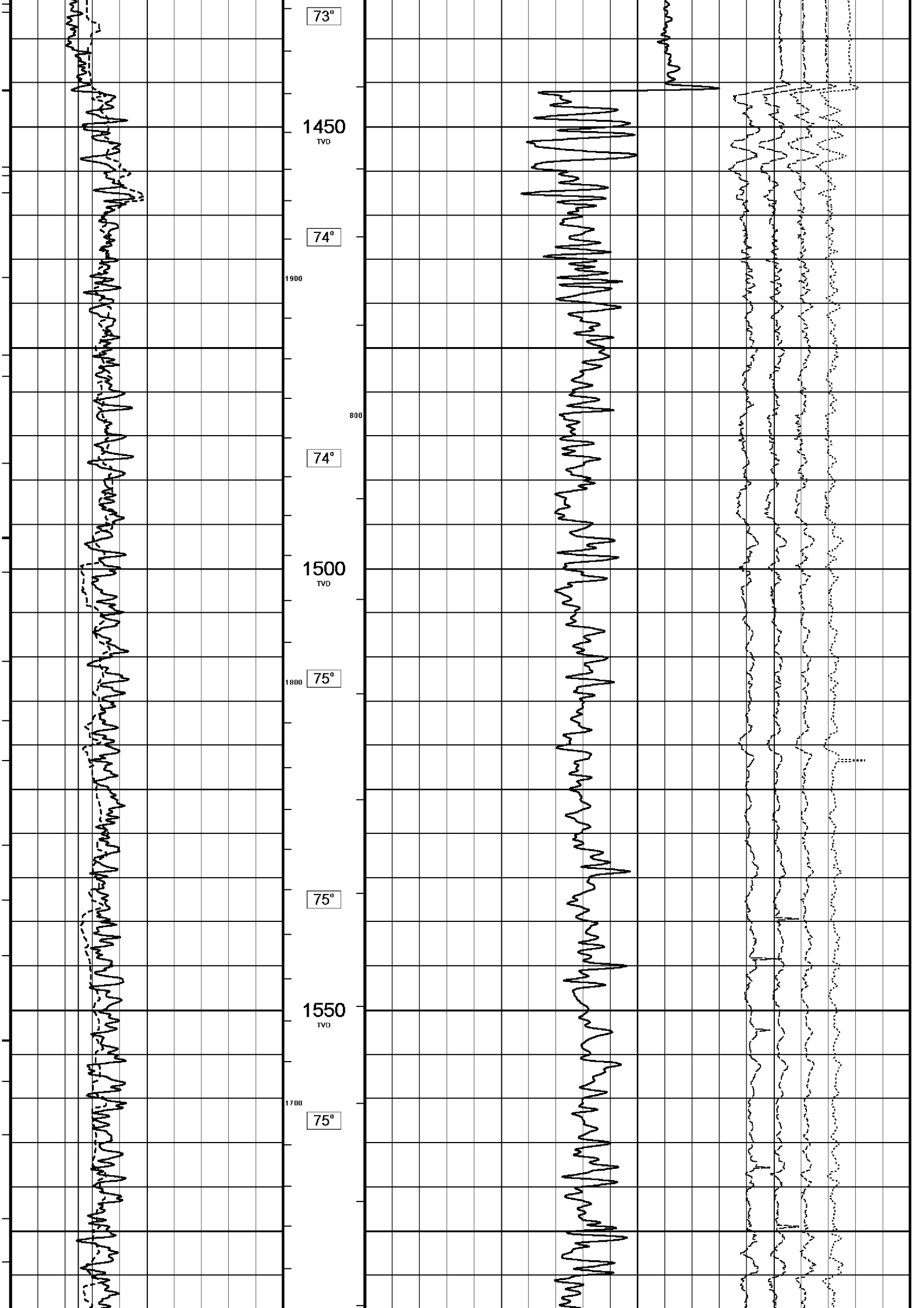
2600

66°

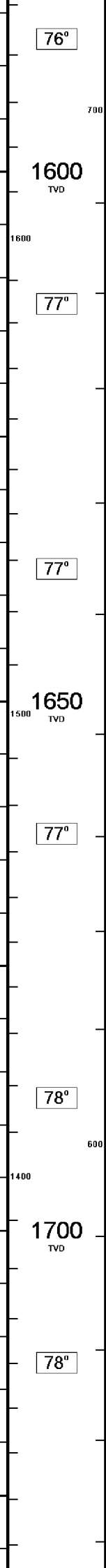








Handwritten notes in the left margin, likely describing geological observations or survey details.



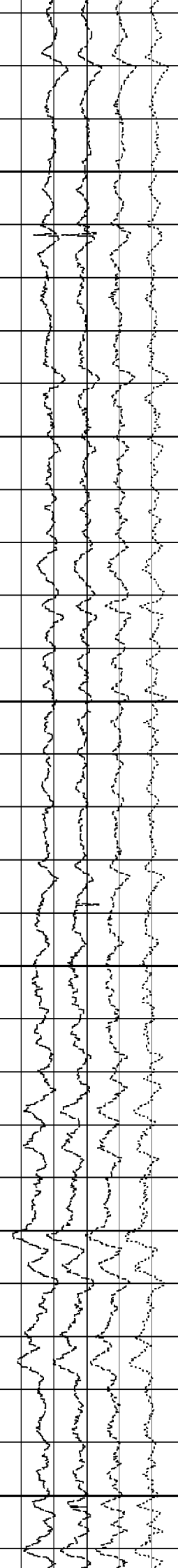
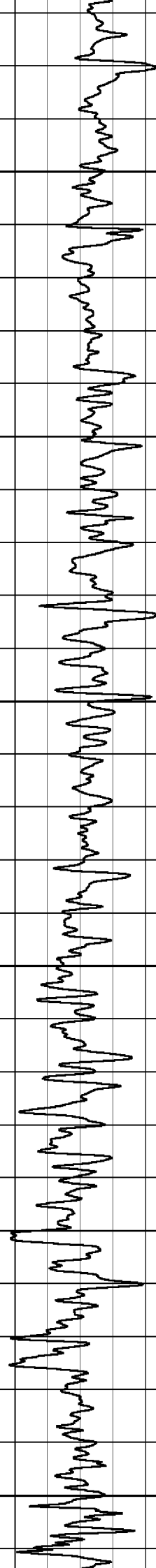
700

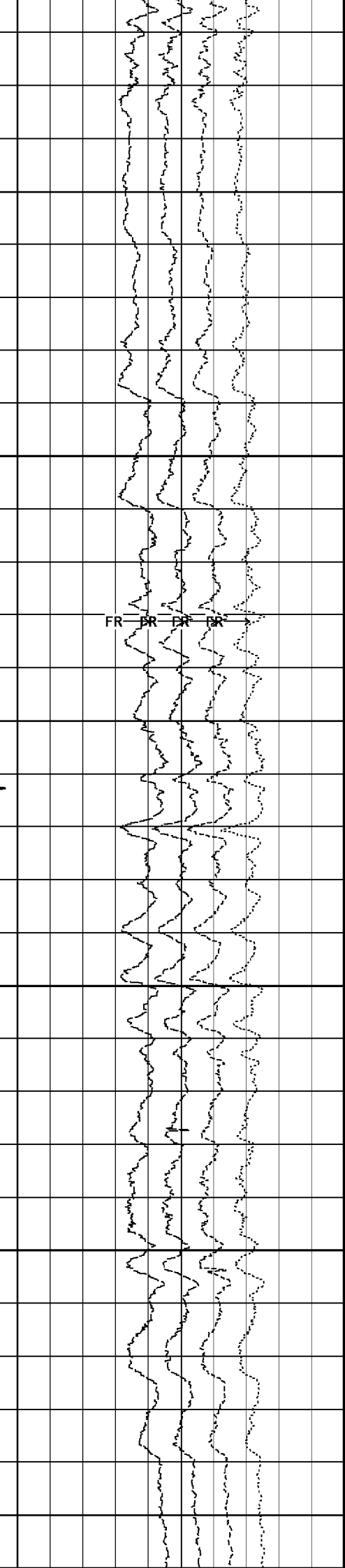
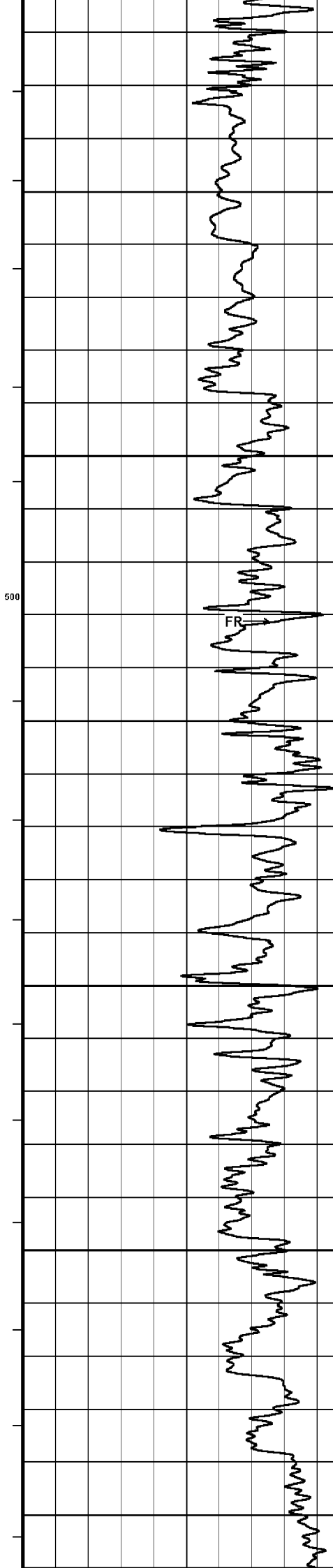
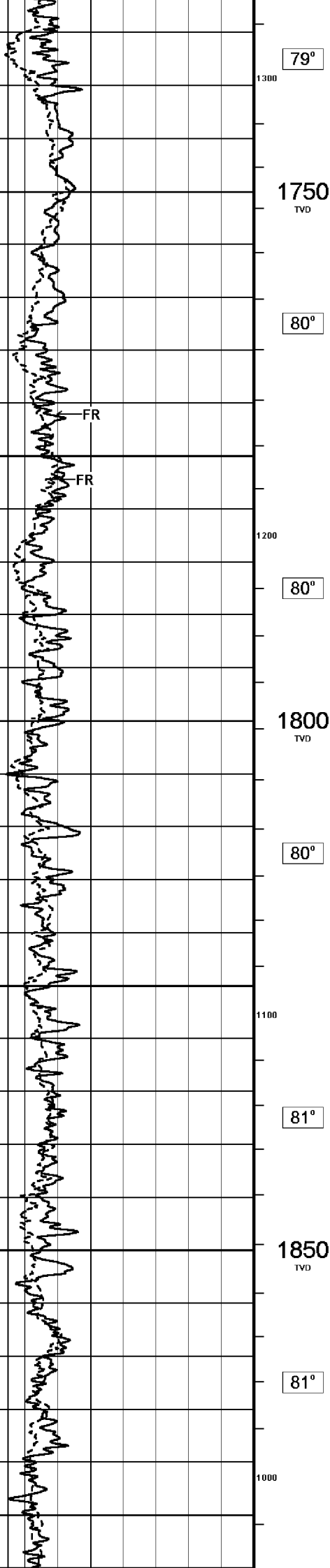
1600

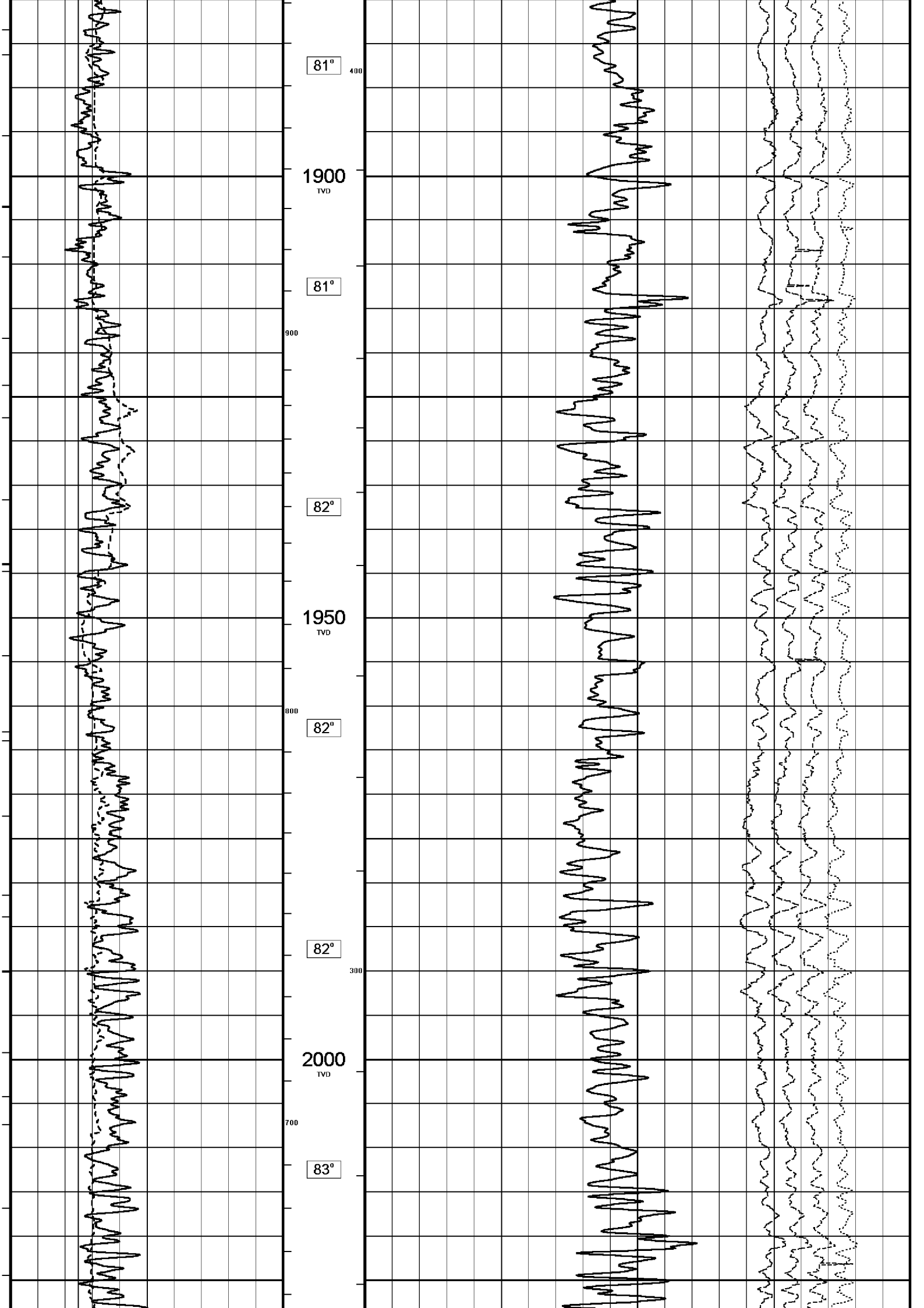
1500

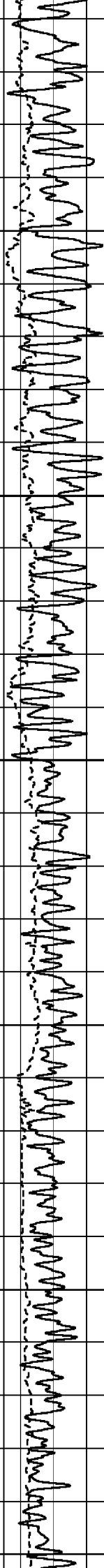
600

1400









83°

2050
TVD

600

83°

83°

2100
TVD

500

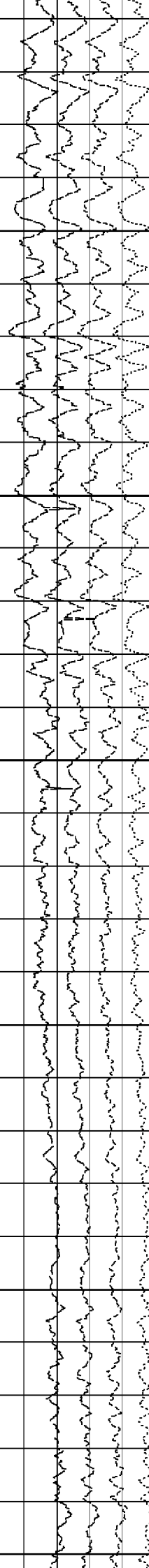
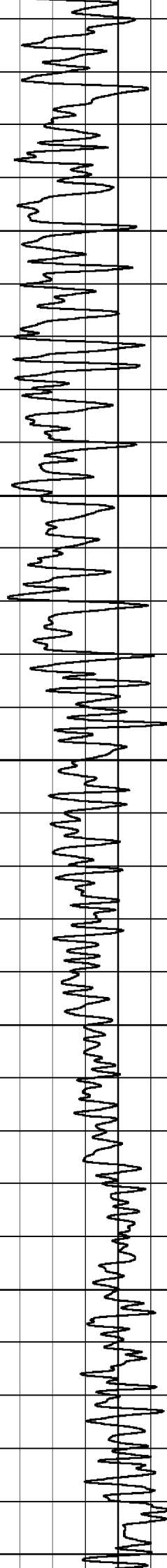
83°

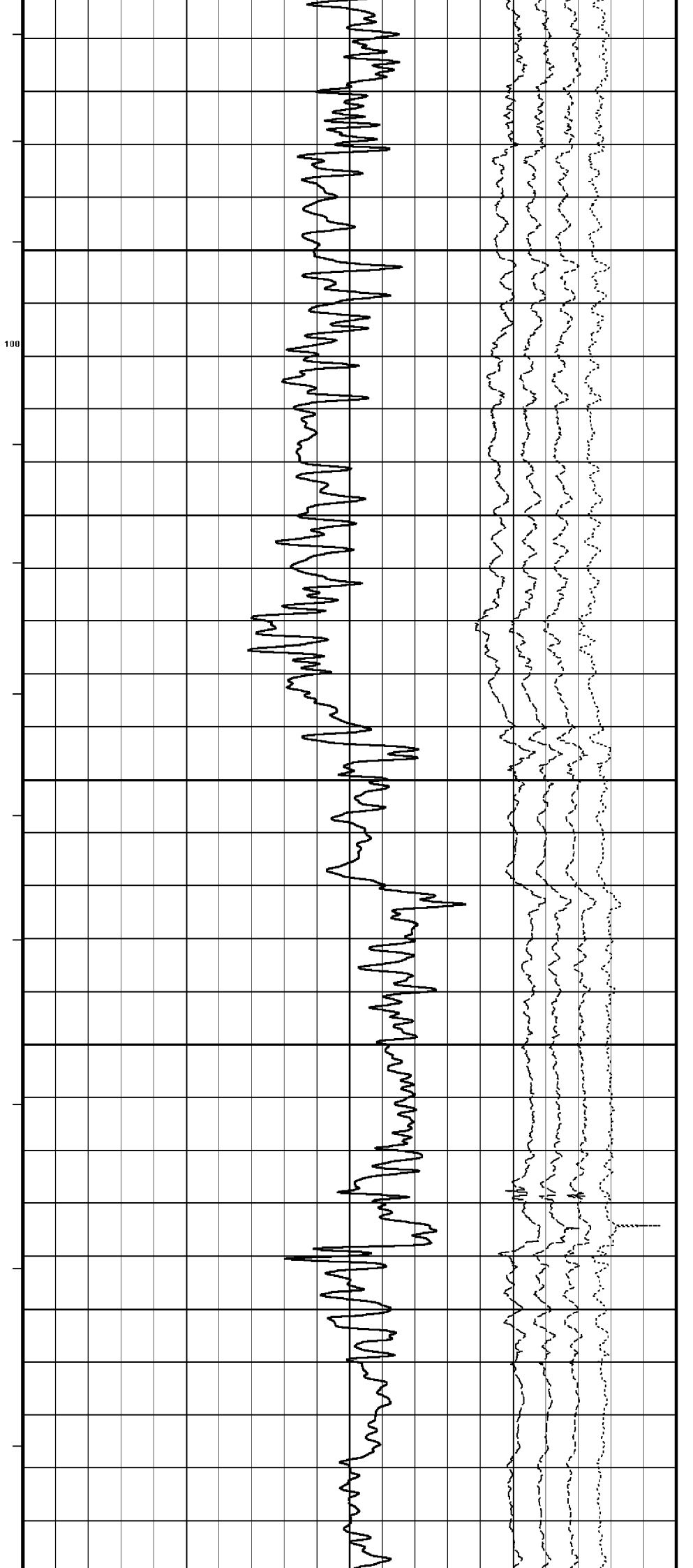
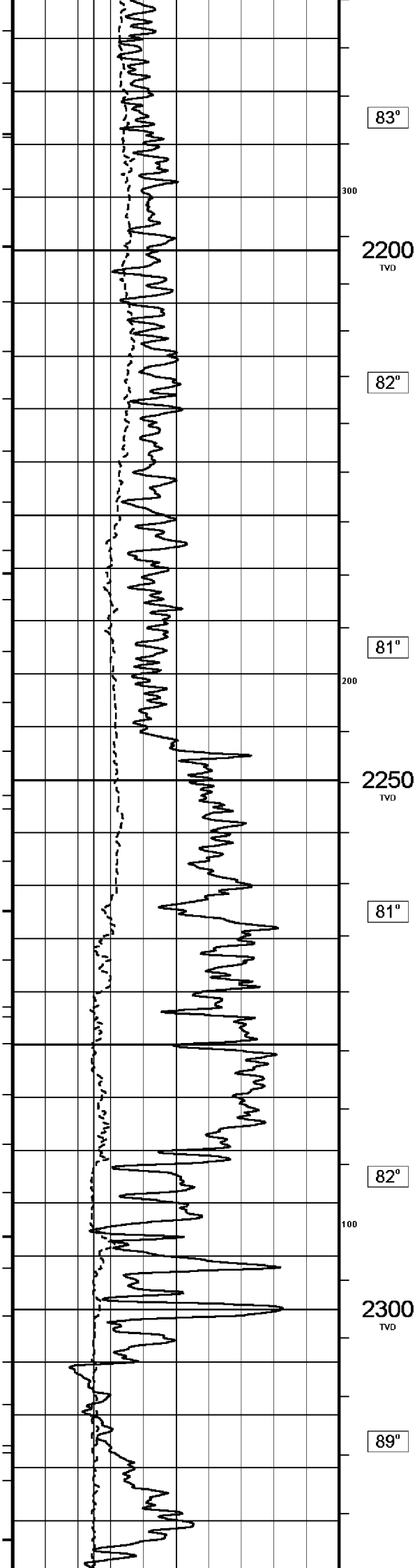
83°

400

2150
TVD

83°





Density/Neutron Processing				
Hole/Annular Volume and Differential Caliper Parameters				
HVOL Caliper 1	Density Caliper			
HVOL Caliper 2	Density Caliper			
Annular Volume Diameter	7.000	inches		
Caliper for Differential Caliper	None			
Rwa Parameters				
Porosity used	Base Density Porosity			
Resistivity used	Deep Induction			
RWA Constant A	0.610			
RWA Constant M	2.150			
High Resolution Temperature Calibration MCG 142				
	Measured	Calibrated(Deg C)		Field Calibration on 21-JUN-2006,15:43
Lower	0.00	0.00		
Upper	100.00	100.00		
High Resolution Temperature Constants MCG 142				
Pre-filter Length	11			
Gamma Calibration MCG 142				
	Measured	Calibrated (API)		Field Calibration on 24-JUL-2006 01:45
Background	22	15		
Calibrator (Gross)	1363	924		
Calibrator (Net)	1341	909		
Gamma Constants MCG 142				
Gamma Calibrator Number	60			
Mud Density	1.16	gm/cc		
Caliper Source for Processing	Density Caliper			
Tool Position	Eccentred			
Concentration of KCl	0.00	kppm		
Caliper Calibration MPD 083				
			Base Calibration on 19-JUL-2006 12:33	
			Field Calibration on 24-JUL-2006,02:04	
Base Calibration				
Reading No	Measured	Calibrator Size (in)		
1	15377	4.01		
2	22794	5.99		
3	31114	7.98		
4	39638	9.94		
5	48896	12.01		
6	N/A	N/A		
Field Calibration				
	Measured Caliper (in)	Actual Caliper (in)		
	7.98	7.98		
Sonic Constants MSS 066				
Maximum Boundary Contrast	100.00	micro-sec/ft		
Fluid Transit Time	189.00	micro-sec/ft		
Limestone Transit Time	47.50	micro-sec/ft		
Sandstone Transit Time	55.50	micro-sec/ft		
Dolomite Transit Time	43.50	micro-sec/ft		
Sonic used for Porosities	3-5' Compensated Sonic			
Correction for Sonde Skew	Applied			
Cycle Stretch Algorithm	Applied			
MN3FT	N/A	micro-sec		
MX3FT	N/A	micro-sec		
Fixed Gate Parameters				
Start Time (micro-sec)	End Time (micro-sec)	Discriminator (mV)	N/A	
N/A	N/A	N/A	N/A	
N/A	N/A	N/A	N/A	
N/A	N/A	N/A	N/A	
N/A	N/A	N/A	N/A	
N/A	N/A	N/A	N/A	
Down Hole Fixed Gate Parameters				
Gate Start	N/A	micro-sec		
Gate Width	N/A	micro-sec		

Gate Width	N/A	micro-sec
Initial Discriminator Level	0.0000	mVolts
Full Waveform Parameters		
Use 3' Waveform to derive TR	No	
Use 4' Waveform to derive TR	No	
Use 5' Waveform to derive TR	No	
Use 6' Waveform to derive TR	No	
3' Waveform Discriminator Level	0.45	mV
4' Waveform Discriminator Level	0.45	mV
5' Waveform Discriminator Level	0.35	mV
6' Waveform Discriminator Level	0.35	mV
3' Waveform Filter	None	
4' Waveform Filter	None	
5' Waveform Filter	None	
6' Waveform Filter	None	
Semblance Level	0.50	
Semblance Window Width	120.00	micro-sec
Sonic 1 Despiker	100.00	micro-sec/ft
Sonic 2 Despiker	100.00	micro-sec/ft

DOWNHOLE EQUIPMENT

C:\logs\WKF_W27A\FIELD_DATA\WKF_W27A_MAIN_LOG.dta

Compact Swivel Head Adaptor F
SHA 71 Length: 0.83 m Weight: 26.5 lb

Compact Knuckle Joint
SKJ 100 Length: 0.66 m Weight: 24.3 lb

Compact Battery Sub.
MBS 99 Length: 4.41 m Weight: 44.1 lb

Compact Inline Standoff B
MIS 31 Length: 0.65 m Weight: 15.4 lb

Compact Stiff Bridle Electrode Sub.
MBE 18 Length: 3.76 m Weight: 94.8 lb

Compact Inline Standoff B
MIS 141 Length: 0.65 m Weight: 15.4 lb

Compact Stiff Bridle Electrode Sub.
MBE 19 Length: 3.76 m Weight: 94.8 lb

Compact Inline Standoff B



Compact Inline Standoff B
MIS 129 Length: 0.65 m Weight: 15.4 lb

MBE 21 Compact Stiff Bridle Electrode
MLK 111 Length: 3.76 m Weight: 94.8 lb

Compact Inline Standoff B
MIS 135 Length: 0.65 m Weight: 15.4 lb

Compact Gamma
MCG 142 Length: 2.65 m Weight: 63.9 lb

Compact Memory Sub A.C
MMS 38 Length: 0.95 m Weight: 30.9 lb

Compact Inline Bowspring A
MIS 95 Length: 1.74 m Weight: 33.1 lb

Compact Swivel Head Adaptor F
SHA 64 Length: 0.83 m Weight: 26.5 lb

Compact Knuckle Joint
SKJ 101 Length: 0.66 m Weight: 24.3 lb

Compact Neutron
MDN 85 Length: 1.53 m Weight: 50.7 lb

Compact Density/Caliper
MPD 83 Length: 2.92 m Weight: 90.4 lb

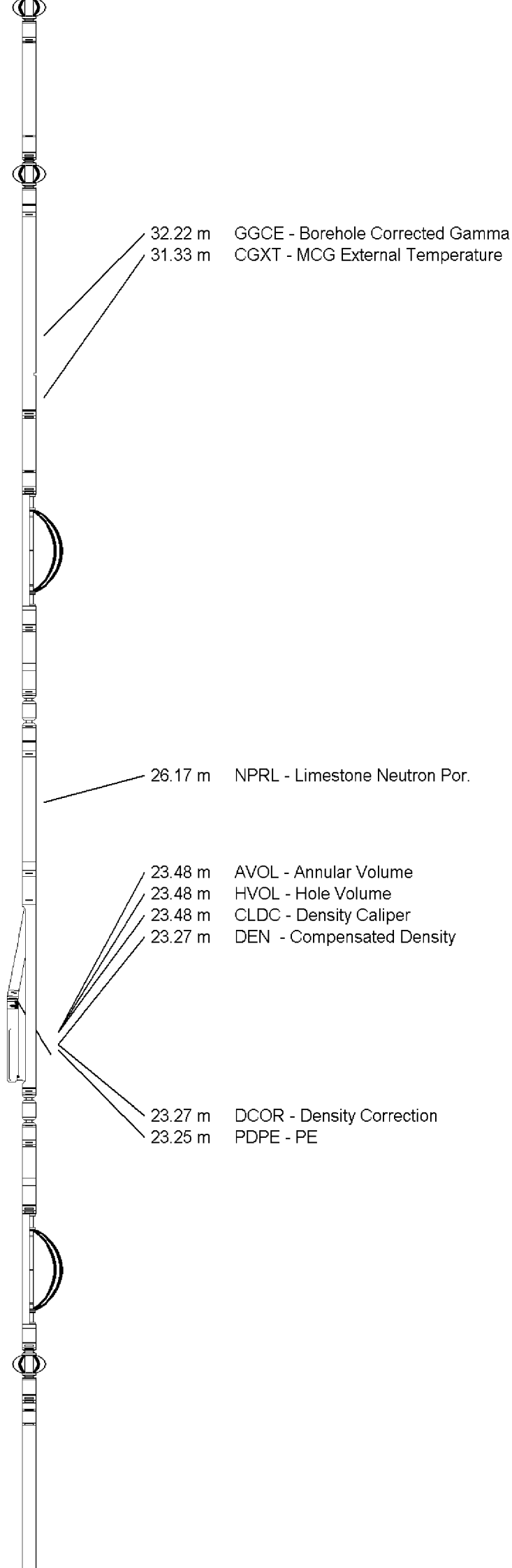
Compact Knuckle Joint
SKJ 46 Length: 0.66 m Weight: 24.3 lb

Compact Swivel Head Adaptor F
SHA 73 Length: 0.83 m Weight: 26.5 lb

Compact Inline Bowspring A
MIS 24 Length: 1.74 m Weight: 33.1 lb

Compact Inline Standoff B
MIS 132 Length: 0.65 m Weight: 15.4 lb

Compact Upper Guard Sub.
MUG 30 Length: 2.74 m Weight: 68.3 lb



Compact Inline Standoff B
MIS 139 Length: 0.65 m Weight: 15.4 lb

Compact Laterolog Electrode Sub.
MLE 31 Length: 3.76 m Weight: 92.6 lb

Compact Inline Standoff B
MIS 138 Length: 0.65 m Weight: 15.4 lb

Compact Lower Guard Sub.
MLG 7 Length: 2.44 m Weight: 55.1 lb

Compact Inline Standoff B
MIS 73 Length: 0.65 m Weight: 15.4 lb

Compact Sonic
MSS 66 Length: 3.82 m Weight: 72.8 lb

Compact Inline Standoff B
MIS 127 Length: 0.65 m Weight: 15.4 lb

Compact Induction
MAI 39 Length: 3.29 m Weight: 48.5 lb

Pressure Bung + Hole Finder
HFS 4 Length: 0.40 m Weight: 6.6 lb

Total Length: 54.01 m Weight: 1265.5 lb



13.35 m DDLL - Deep Laterolog
13.35 m DSLL - Shallow Laterolog

4.60 m TR22 - 5' Transit Time
4.60 m TR11 - 4' Transit Time
4.60 m TR21 - 3' Transit Time
4.60 m TR12 - 6' Transit Time

4.60 m DT35 - 3-5' Compensated Sonic

Tool Zero (0.44m from bottom)

All measurements relative to tool zero.

COMPANY	ESSO AUSTRALIA PTY.LTD
WELL	WKF W27A
FIELD	KINGFISH GDA94
PROVINCE/COUNTY	BASS STRAIT, VICTORIA
COUNTRY/STATE	AUSTRALIA

Elevation Kelly Bushing	metres	First Reading	2362.00	metres
-------------------------	--------	---------------	---------	--------

Elevation Drill Floor	33.43	metres	Depth Driller	2366.00	metres
Elevation Ground Level	-76.13	metres	Depth Logger	2366.00	metres



COMPENSATED SONIC
1:500 TVD